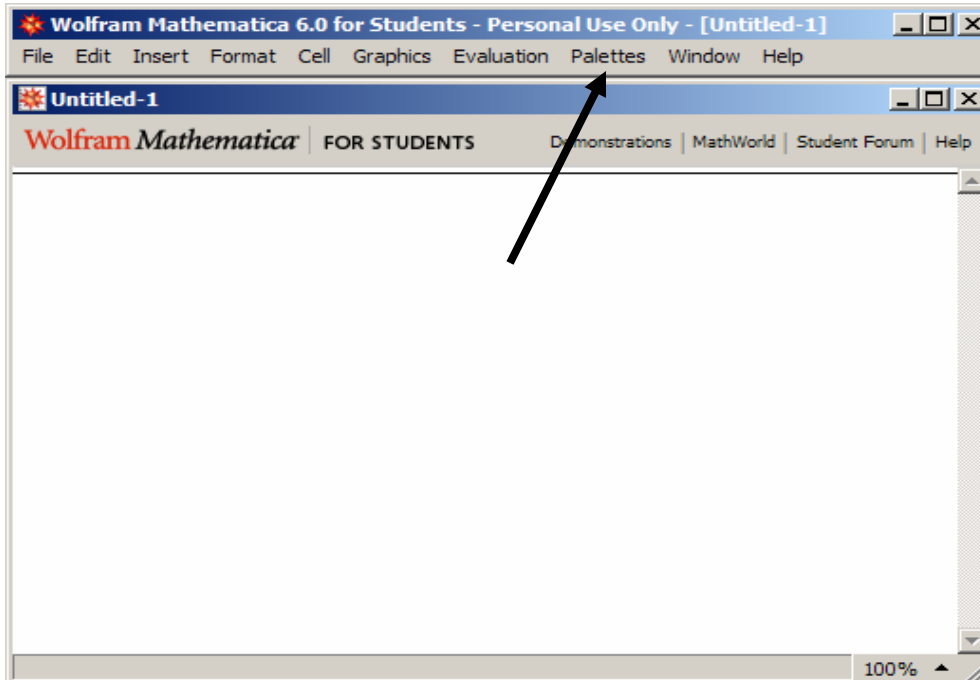
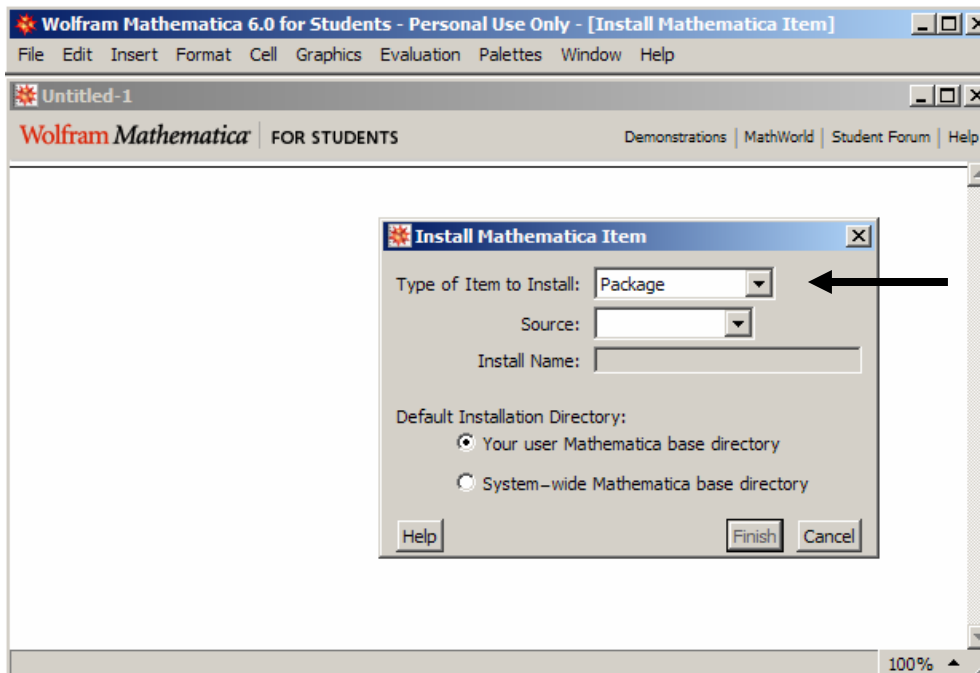


Instructions for installing the SCCC package.

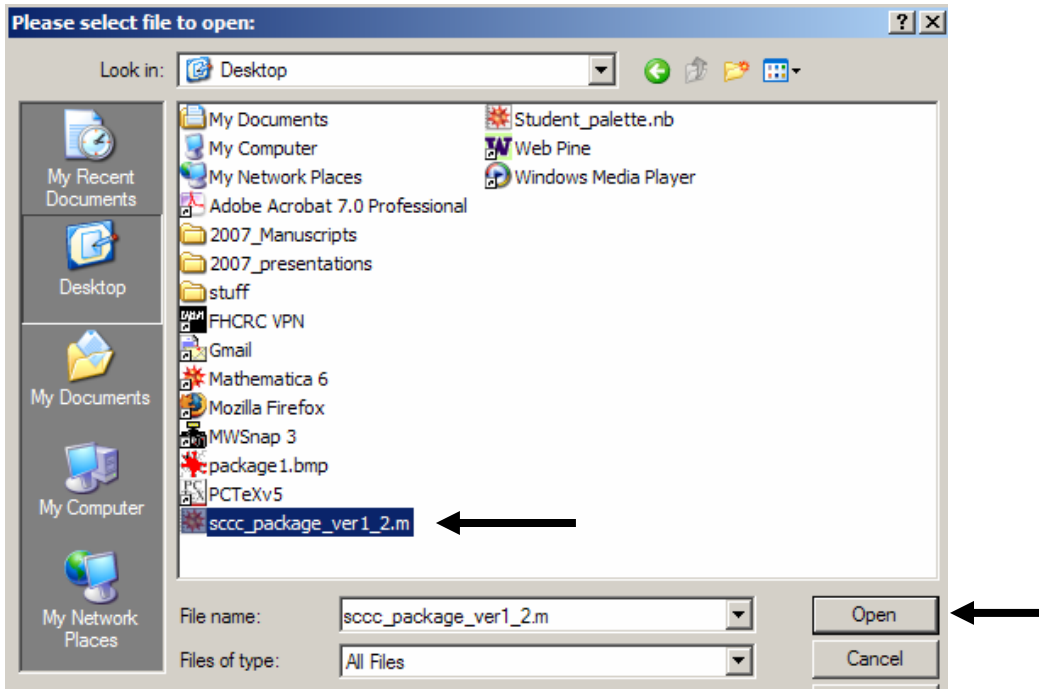
1. Download the SCCC package file onto your Desktop (or other convenient location).
2. Open *Mathematica*
3. Select Palettes from the Menu, Click on Install palette ...



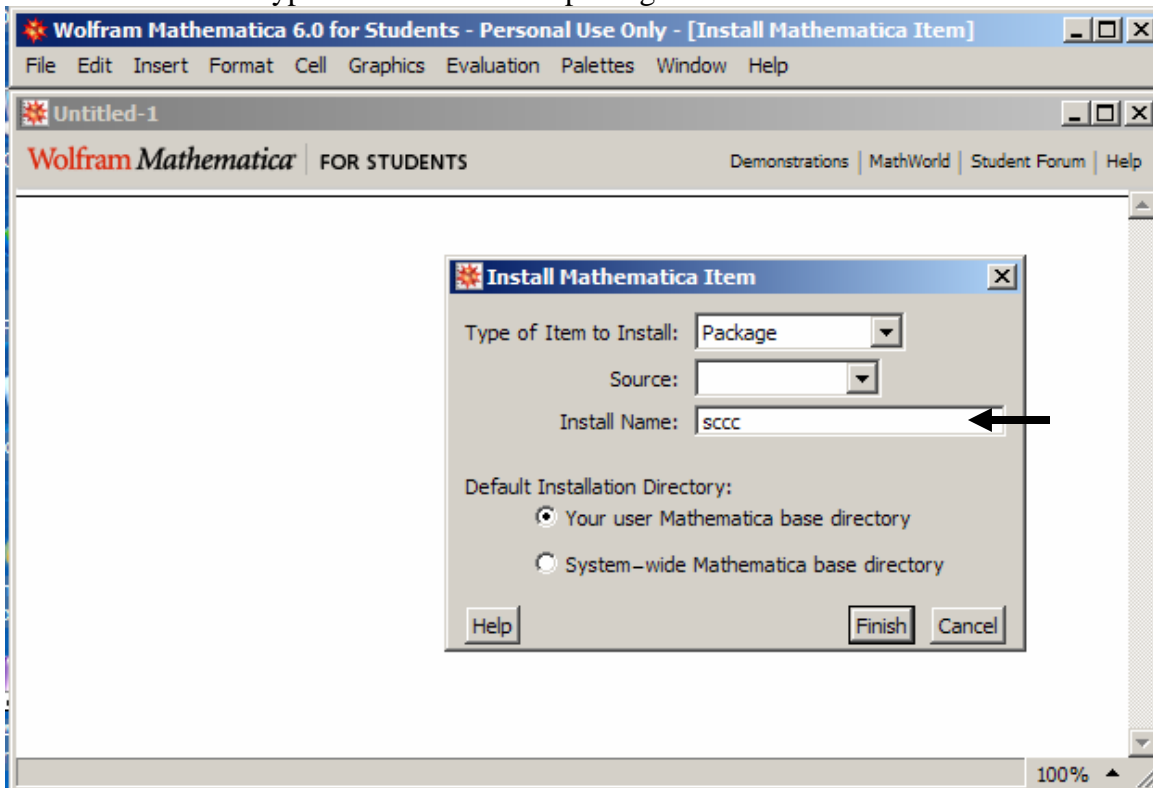
4. For Type of Item to Install select Package from drop down menu.  
Then for Source choose From File ...



5. Browse to find sccc package file, click on file and press Open



6. For Install Name type in the name of the package: sccc



7. Press Finish

To check that the package has been successfully installed type `<< sccc`` .  
You should get the output shown below.

