



Seattle Central Community College

Agents Newsletter - Fall 2007

Dear Education Partner, Greetings from SEATTLE!

I hope your Fall quarter went well and that all your students reached their final destinations safely. On behalf of our department, I would like to thank you for your hard work helping students enroll at Seattle Central. We're looking forward to working with you on our Winter and Spring quarter intakes.

-Johan François, Assistant Director of Marketing

Fall quarter is almost over and we're now preparing for **Winter & Spring quarters**. Here are some **important dates** for you to remember:

WINTER quarter

Orientations: December 20th (College Bridge & College)

January 2nd - 4th (Intensive ESL)

Classes start: January 2nd (College Bridge & College)

January 8th (Intensive ESL)

Classes end: March 16th (Intensive ESL)

March 21st (College Bridge & College)

SPRING quarter

DEADLINE FOR APPLICATION: February 1st, 2008 for all under-age (16&17 year old) High School completion applicants.

All other applicants are encouraged to apply early, ideally at least 10 weeks before the start of the quarter.

Orientations: March 20th (College Bridge & College)

March 24th - 27th (Intensive ESL)

Classes start: April 2nd

Classes end: June 8th (Intensive ESL)

June 16th (College Bridge & College)

As always, applying for admission to Seattle Central is easy.

Complete our online application or download our form and submit it via mail or fax. For more information, please visit:

http://seattlecentral.edu/international/admission_intro.shtml



Seattle Central is one of the only Community Colleges to offer **scholarships to both NEW & CURRENT international students**. We encourage all students to apply for scholarships. If you currently have students enrolled or in the process of enrolling at Seattle Central, please remind them to apply and, if needed, assist them in this process. **More than \$100,000 is available this year**, so don't miss these great opportunities:

SPRING quarter (Deadline is JANUARY 30th)

New students: Achievement scholarships - \$250 to \$1500 awards

Campus Work Experience scholarships - up to \$5700 over 3 quarters

Current students: Merit scholarships - \$1000 to \$2500 awards

Leaders among leaders scholarships - \$500 awards

Campus Work Experience scholarships - up to \$5700 over 3 quarters

For more info about requirements & eligibility and to download our application

forms, please visit: <http://seattlecentral.edu/international/adminscholarships.shtml>

For questions about Scholarships, please email me at jafrancois@sccd.ctc.edu

• Greetings

• Winter/Spring quarter dates and deadlines

• Scholarships application deadline

Seattle Central Community College

Agents Newsletter - Fall 2007



Seattle Central has established **new deadlines for all 16 and 17 year-old** applicants to our **High School Completion program**. Application deadlines will be as follows:

Spring quarter 2008: February 1, 2008

Summer quarter 2008: May 1, 2008

Seattle Central has also decided to **change the overall age requirement for all applicants, starting Fall 2008**. Effective Fall 2008, all applicants will need to be **17 at the time of enrollment**. This will be a change from the current requirement that students be at least 16 years of age.

After reviewing the success of younger students in our programs, considering maturity of the students and preparedness for study at college level, SCCC has decided that **changing the age to 17 would be beneficial to both the students and the college**. We know that you share our concern about the academic and psycho-social preparedness of young students, and can agree with us that the change will improve their chances for success. Prior to 2005, Seattle Central had required all students to be a minimum of 17. The College temporarily lowered the minimum age to 16 for high school completion students subject to review of their overall performance in a college setting.

Our team **recently revised the acceptance packet** we send students who have been admitted to Seattle Central. **Improvements** were made with you in mind:

- **acceptance materials are now organized under specific sections**. All sections are listed on a **general cover sheet** that covers all pre-departure information.

Checklists are provided so you can easily track what is done and left to do.

- **a tuition estimate** (similar to an **invoice**) is now sent out to every student/agent so they have an **estimate for 1st quarter tuition and mandatory fees**.

- **a tuition & fees wire transfer form** is now provided so students/parents/agents can **make a deposit for expenses related to the student's first quarter of enrollment** (also available online at www.seattlecentral.edu/international/agencies/wiretransfer1.pdf)

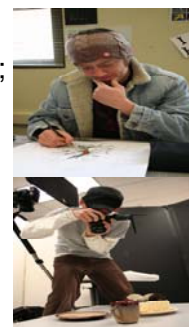
If you are making tuition & fee deposits for more than one student, **use a separate form for each student**. Non-compliance with these directions may result in delayed or lost payments.

Upon payment of the \$50 application fee, SCCC provides one complimentary international express mailing. After the 1st complimentary express mailing, any additional mailing will be sent by regular US Air Mail. If you prefer to have these additional mailings sent by express mail, please submit payment of the US\$40 express mail fee, for each student, to our office.

As you already know, the non-refundable \$50 application fee must be paid before an application is processed. If you defer your student's quarter of enrollment to a future quarter, you may do so without any additional charge. However, if you or your student decides to defer a second time (which means a third mailing), the \$50 fee will need to be paid again. Of course, a complimentary express mail will be included with this second \$50 application fee payment.

As we mentioned in our previous newsletter, a remodel of our 5th floor is currently underway. The **\$8 million project** is now almost over; **the new facility will be open to students starting winter quarter 2008** and host the most comprehensive visual communications training facility in the Northwest.

The newly renovated **38000 square-foot space** will include new photo studios, computer labs, faculty offices, a color management room, library, open student lounge, state-of-the-art input/output lab, gallery, and conference room.



- Important changes to admission requirements

- Acceptance packet changes

- Updates in our express mail fee policy

- Updates in our application fee policy

- SCCC 5th floor renovation updates

Seattle Central Community College

Agents Newsletter - Fall 2007



- University Transfer Fair

Choosing the right 4 year College/University is an important decision every student interested in a Bachelor's degree will have to make. It is a decision that requires both research and careful planning.

Seattle Central and its **College Transfer Center** assist all international students with the transfer exploration and application process. Every quarter, Seattle Central invites many 4 year Colleges & Universities to its transfer fair, so that students can meet College/University representatives, get some detailed information & brochures, and get a head start on their transfer process!

Each year, many of our students graduate from our programs and transfer to well-known 4 year Colleges/Universities. For a **sampling of institutions our students were accepted to**, please consult:

<http://www.seattlecentral.edu/international/agencies/transferColleges.pdf>



- Questions? Email us!

If you have any questions, don't hesitate to email us. Our entire team is looking forward to working with you and your students.

For questions related to admission, study programs, immigration, I-20s, please email our advisors at iepsccc@sccd.ctc.edu

For questions related to Marketing, please email Leslie Aest at Laest@sccd.ctc.edu

For questions related to Scholarships, please email me at jafrancois@sccd.ctc.edu

If your students have general questions related to academics, life on campus and in Seattle, please contact one of our current students at askastudent@sccd.ctc.edu (questions in English only).

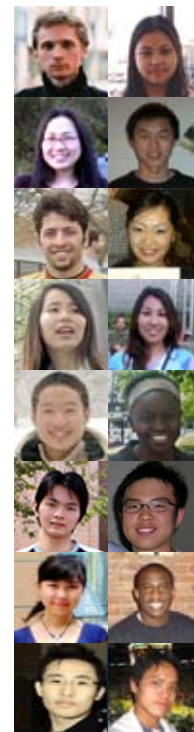
Feel free to refer your students to one of our new email accounts:

askastudentchina@sccd.ctc.edu (questions in Chinese only)

askastudentjapan@sccd.ctc.edu (questions in Japanese only)

askastudentvietnam@sccd.ctc.edu (questions in Vietnamese only)

We will soon have [askastudentindonesia](mailto:askastudentindonesia@sccd.ctc.edu) and [askastudentkorea](mailto:askastudentkorea@sccd.ctc.edu) email accounts for questions in these 2 languages. We will keep you posted as soon as these are available for your students.



- Need to talk to us?
Call us on SKYPE!

Familiar with SKYPE? Skype is a free software that allows people to make free, unlimited, computer to computer phone calls over the internet. Software and additional information are available at www.skype.com
Already a user? Leslie and I will soon have SKYPE usernames available for you. Look out for our upcoming email, add our usernames to your skype contact list and, when needed, give us a call! FREE!!!

- Next Newsletter
Winter 2008

Our next newsletter will be sent out to you beginning of **January 2008**. As usual, it will be filled with important school updates. Don't miss it!

Seattle Central Community College International Education Programs