



Seattle Central Community College

Agents Newsletter - Get ready for recruitment crunch time

Dear Education Partner,

Greetings from SEATTLE!

SPRING is around the corner, and soon many students will come to you looking for quality overseas institutions to further their studies.

No worries, we're here to help! So relax, read this newsletter and enjoy a smooth, stress-free & productive recruitment campaign.

-Johan François, Assistant Director of Marketing

Applying for admission to Seattle Central is very easy: Complete our online application or download our form at <http://seattlecentral.edu/international/application.shtml> , then submit via internet, mail, or fax.

Don't forget a cover letter so that we can track your students and pay you commissions & annual bonus (see http://seattlecentral.edu/international/agency_coverletter.doc for template).

To apply for admission to Seattle Central, you must submit the following documents:

1. Completed International Student Application form.
2. Sponsor's statement of support
3. US \$50 application and processing fee (non-refundable)
4. Bank statement / letter from sponsor's bank showing sufficient funds are available (US \$15000)
5. Copy of Passport (photo page only)
6. Proof of English proficiency (not required for applicants to the Intensive & Advanced ESL programs)
7. Under-age 16&17 year old students who haven't graduated from high school: Official transcripts
8. Transfer Students: completed Transfer Status Verification form & copy of current I-20
9. Deposit required for applicants from certain countries (seattlecentral.edu/international/deposit.shtml)

Once your complete application is received, it will be processed within 2-3 days and student acceptance materials will be sent out to you shortly.

For more info, please visit http://seattlecentral.edu/international/admission_intro.shtml

Some of you contacted me with questions regarding Seattle Central's new age requirement. I wanted to take this opportunity to clarify our new policy:

Effective Fall quarter 2008, all applicants will need to be 17 years of age at the time of enrollment OR have completed High School. Following this new policy, a student aged 16 who HAS completed High School could apply to one of SCCC study programs and would be considered for admission.

Here are some **important dates** for you to remember:

SUMMER quarter

DEADLINE for application: **May 10th, 2008** ; Classes start: June 26th

Fall quarter

DEADLINE for application: **August 1st, 2008** ; Classes start: September 22nd

Seattle Central offers **scholarships opportunities** to all **NEW international students**. Both applications for admission & scholarships can be submitted at the same time. More than \$100,000 is available this coming year and applying has never been so easy, so don't miss these great opportunities! **Summer / Fall quarter deadlines are April 15th / July 15th.**

For more information about requirements & eligibility and to download our application form, please visit: <http://seattlecentral.edu/international/adminscholarships.shtml>

For questions related to Scholarships, please email me at jafraancois@sccd.ctc.edu

- Greetings

- Applying to Seattle Central

- New age requirement

- Summer/Fall quarter dates

- Scholarships



Seattle Central Community College

Agents Newsletter - Get ready for recruitment crunch time

Last year, SCCC International Education Programs redesigned its marketing materials for agents and prospective students. Our new standard application packet now includes:

- A color brochure including many pictures, and giving a general presentation of Seattle Central, its location, study programs, services, and resources available to students.
- A study program brochure (green booklet) that provides a detailed description of all our study programs, as well as important information regarding cost of attendance (tuition & fees and cost of living estimates), housing, airport pickup, and English proficiency requirements.
- An admission and scholarship application brochure (blue booklet) that includes both our application forms for admission and scholarships for new students.
- We also have one-page handouts & posters with highlights available in many languages.

We want to support you in your promotion & recruitment efforts and have put together an online material request form you can use. To order materials, visit the following webpage http://seattlecentral.edu/international/agencies/online_materials_request_login.php and tell us what you need & would like to receive. We'll ship materials directly to your office.

Winter quarter 2008, Seattle Central Community College welcomed its 1000th student in one quarter of enrollment. Seattle Central highly values diversity and is proud to welcome students from more than 60 different countries.

Over the years, our International Education Programs has welcomed over 25000 students and received many national media awards for the quality of its programs, faculty, and services, as well as high success rate in transferring students to TOP Universities all over the United States.

Our team is working hard to keep our services to students of the highest standard and has hired several full-time academic advisors to assist students. So rest assured that your students will be well taken care of until they graduate!

If you have any questions, don't hesitate to email us. Our entire team is looking forward to working with you and your students.

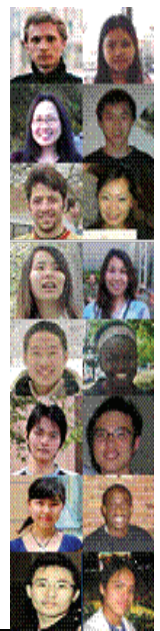
For questions related to admission, study programs, immigration, I-20s, please email our advisors at iepsccc@sccd.ctc.edu

For questions related to Marketing, please email Leslie Aest at Laest@sccd.ctc.edu

For questions related to Scholarships, please email Johan Francois at jafrancois@sccd.ctc.edu

If your students have general questions related to academics, life on campus and in Seattle, please contact one of our current students at askastudent@sccd.ctc.edu (questions in English only).

Feel free also to refer your students to one of our new email accounts: askastudentjapan@sccd.ctc.edu (questions in Japanese only)



Our next newsletter will be sent out to you beginning of April 2008. As usual, it will be filled with important school updates. Don't miss it!

Seattle Central Community College International Education Programs

• Ordering marketing materials

• Seattle Central's pledge to students

• Questions? Email us!

• Next Newsletter